

SPRING AWAKENING

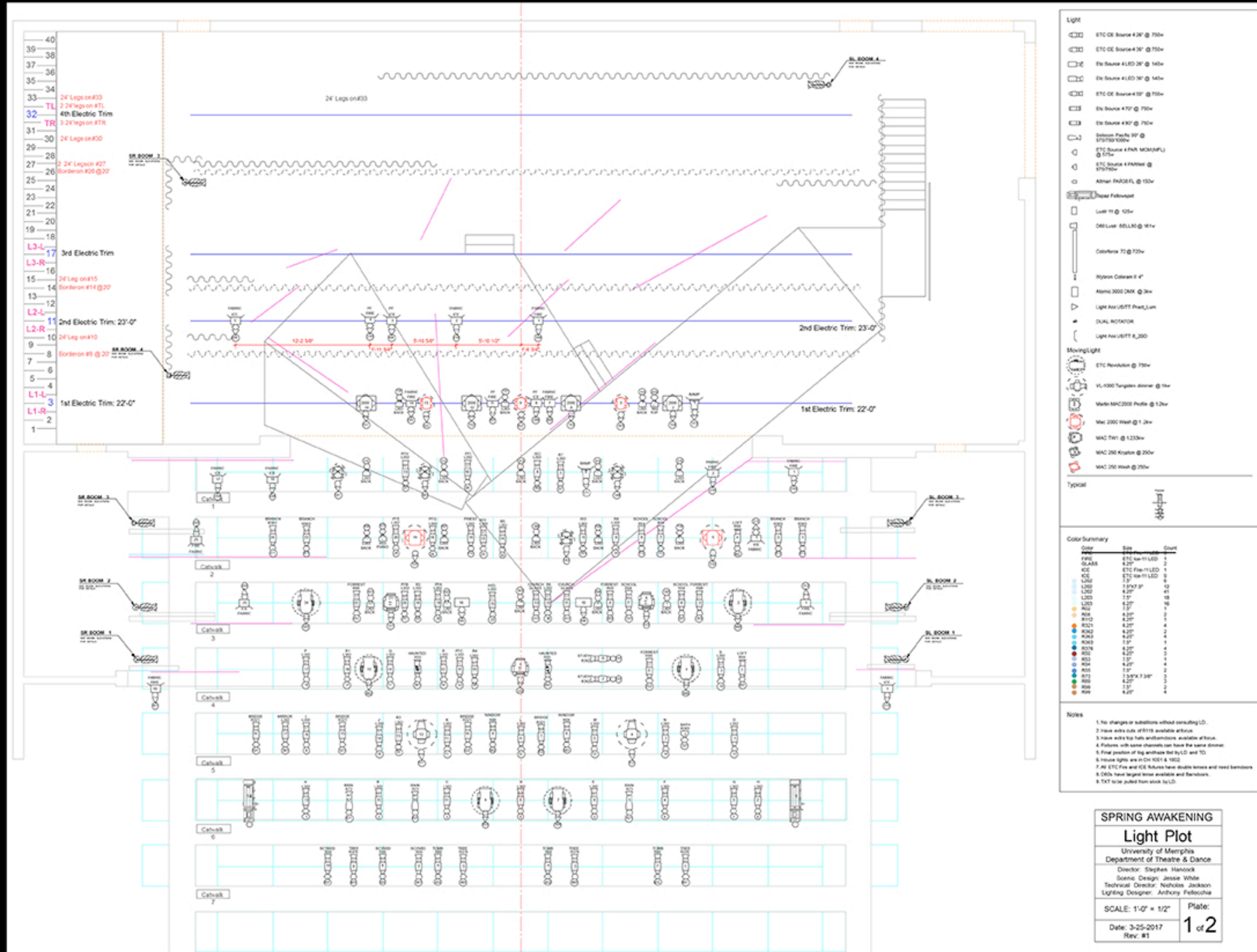
Book and Lyrics: Steven Sater
Music: Duncan Sheik

Lighting Design by Anthony Pellecchia

University of Memphis
Director: Stephen Hancock
Music Director: Jacob Allen
Choreographer: Jill Guyton Nee
Scenery: Jessie White
Costumes: Heather Michelle Oles
Sound: Jackson Connors
Stage Manager: Alex Kesner



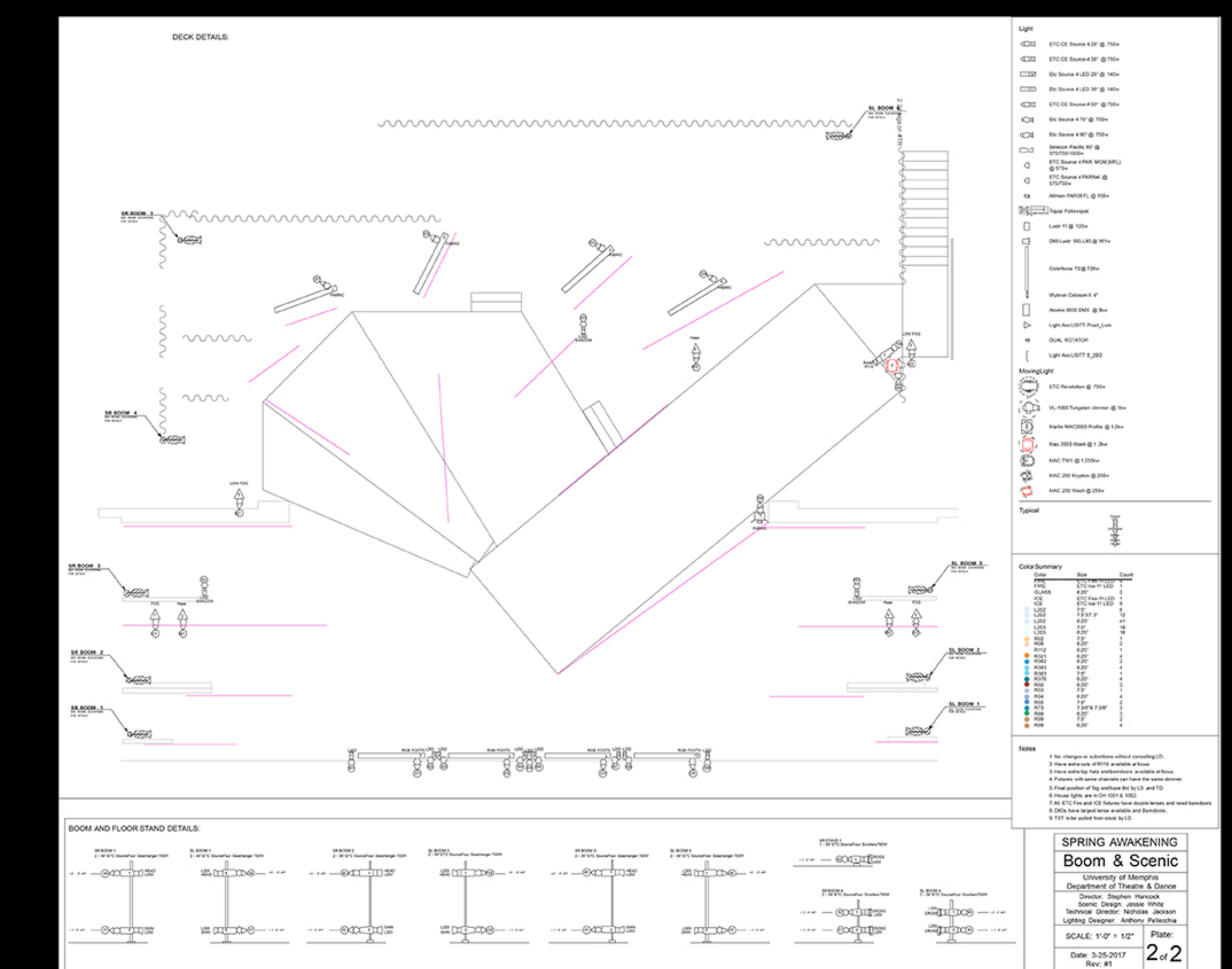
The lighting design for this production reflected the director's chosen themes of breaking the bonds of authority, sexual awakening, teen angst and finding one's place in a dark oppressive world that is full of passion and doubts.



Incorporating various fixture types, textures, tight followspot shots, low angles, colors and isolations, the lighting distinguished between what the director called the "Real World" and the "Singing World." Additionally, these lighting choices established multiple locations, such as a classroom, house interiors, natural exteriors, a funeral, a hayloft, a church, and more.



Lighting choices regarding color, static and rotating textures as well as shadow play, integrated the numerous vertical fabric surfaces that were stretched, angled and twisted as canvases. This amplified the contrasts between the dark nature of the story's overbearing and repressive adults with the passionate and youthful energy of the teenagers.



SPRING AWAKENING				MAGIC SHEET				
28	24	25	26	362	LED - 169	SHINS	HEADS	SCRS
20	21	22	23	35	KRY - 164	43 53	46 56	63 65
16	17	18	19	36	BACKS	42 52	45 55	62 64
9	10	11	12	34	116 117 118	41 51	44 54	61
1	2	3	4	19	111 112 113 114 115 117			
				8	106 107 108 109 110			
					101 102 103 104 105			
221	222	223	224		HAZE - 801, 802	SPOT		
206	208				FOG - 811, 812	2K - 151, 152, 153, 154		
205	207	210			LOW - 821, 822	KRY - 161, 162, 163		
204		211			REVS - 601, 602, 603, 604, 605, 606	ATOMIC		
203	FABRIC	212			VLs - 611, 612	195		
202		213			FOOTS 231 232 233 234	196		
201		214			501 502 503 504 505 506 507 508 509	HOUSE		
					SHADOW - 521, 522, 523	901, 902		
MIRROR - 301	SCHOOL - 311, 312	BRIDGE - 321, 322	PIANO - 325					
WINDOW - 302, 303			BATH - 327					
HAUNTED - 380, 381	TREE - 401	SCHYARD - 361	BRANCH - 371, 372					
LOFT - 382, 383	PRIEST - 412	RAIN - 421	TOMB - 431, 432, 433					

Photos Credits:
Jo Sanburg
Mary Donaldson