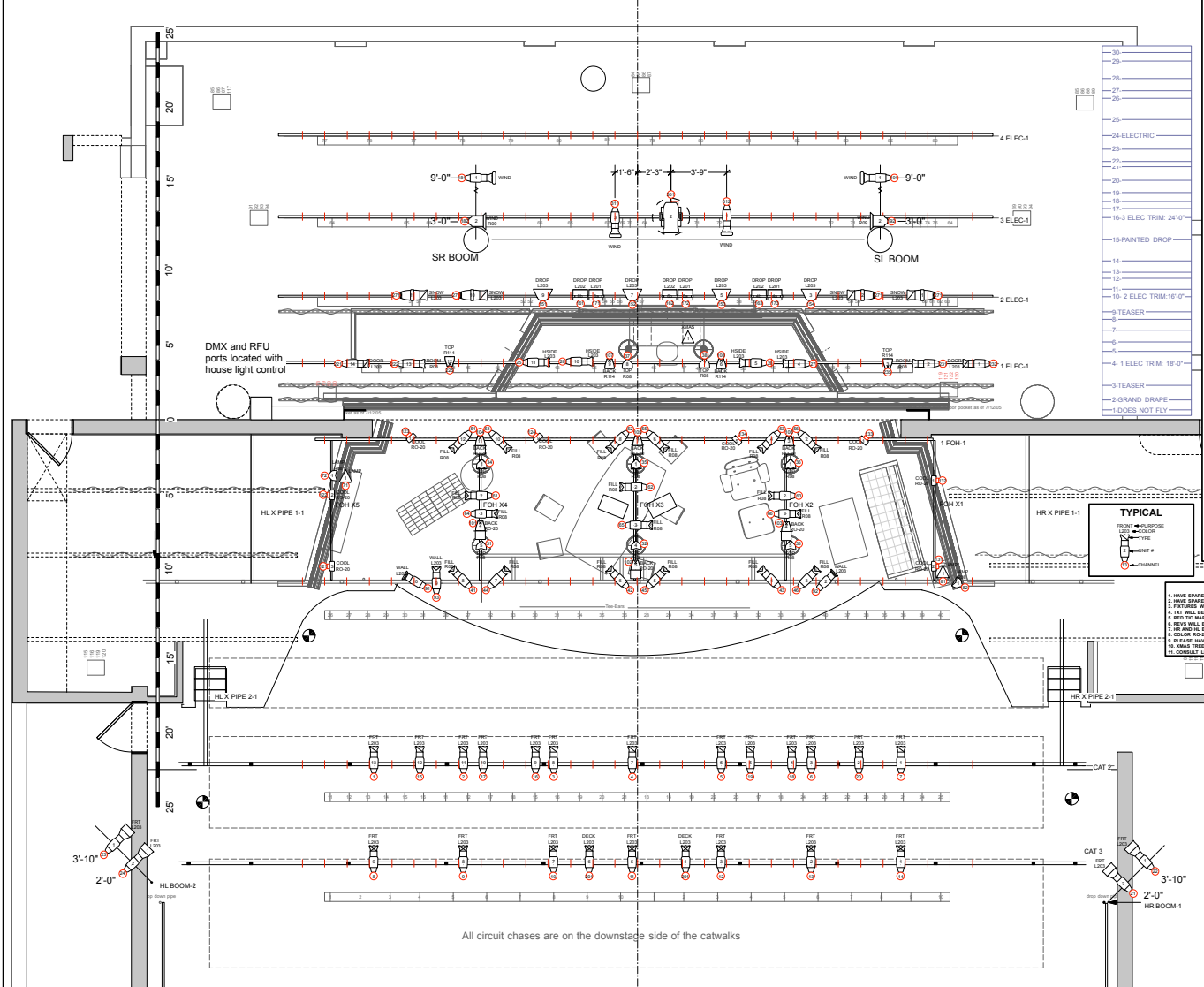


40' 35' 30' 25' 20' 15' 10' 5' 0 5' 10' 15' 20' 25' 30' 35'



**Light**

- ETC Source4 10sq
- ETC Source4 10sq
- ETC Source4 26sq
- ETC Source4 26sq
- ETC Source4 36sq
- ETC Source4 36sq
- ETC Source4 36sq
- ETC Source4 50sq
- ETC Source4 50sq
- ETC Source4 2qm 25sqsq
- ETC Source4 FWR MCM (WF1)
- ETC CS Source4 FWR MCM (WF1)
- ETC ColorSource FWR No Line
- 15-PAINTED DROP
- Strand Of Fresnel
- Chanel COLORrain Pa File 7
- Atlas Ven Scoop
- Atlas EC-6

**Moving Light**

- ETC Revolution

**Practical**

- USITT Practical Linestra

**Accessory**

- Apple SC 3.25

**Static Accessory**

- USITT BoomBase
- USITT Go Top Hat
- USITT Go afterColor

**TYPICAL**

- FROM HOUSE
- TO COLOR
- CABLE
- WIRE
- ARM
- CHASSIS
- TRIM

**NOTES**

1. WIDE SPARE CUTS OF 8/14 AT FOCUS
2. WIDE SPARE TOP AREA AT FOCUS 1.5x DIMMER
3. TEXT WILL BE PULLED FROM STOCK
4. RED T/C MARKS ARE ON V1 CENTER
5. BEAMS WILL BE STRUCK FROM FROM AND PUT ON ELEC
6. USE AND IN SHOW ARE BEAUMING FROM BOTTOM OF COLOR
7. PLEASE HAVE VERTICAL CUTS OF HOOP FOR CELL CYCLE
8. VISIT THIS WILL BE ACTING AND BESETTY OPERATED
9. CONDUCT LB BEFORE MAKING CHANGES/SUBSTITUTIONS



PRODUCED BY  
**Saint Michael's PLAYHOUSE**

Saint Michael's PLAYHOUSE  
ONE WOODS PARK  
COLLESTER, VT 05459  
PHONE: 866.666.9281

**LIGHT PLOT**

DIRECTOR:	CATHERINE CHANNERY
SCenic:	SIAMM DOMING
COSTUMES:	KAREN GLIMMER
LIGHTING:	ANTHONY PELLECCIA
ELECTRICIAN:	JOSE COYLE
DRAWN:	ANTHONY PELLECCIA
DATE:	9/25/2019
PLATE:	1 of 1 SCALE: NTS

All circuit chases are on the downstage side of the catwalks